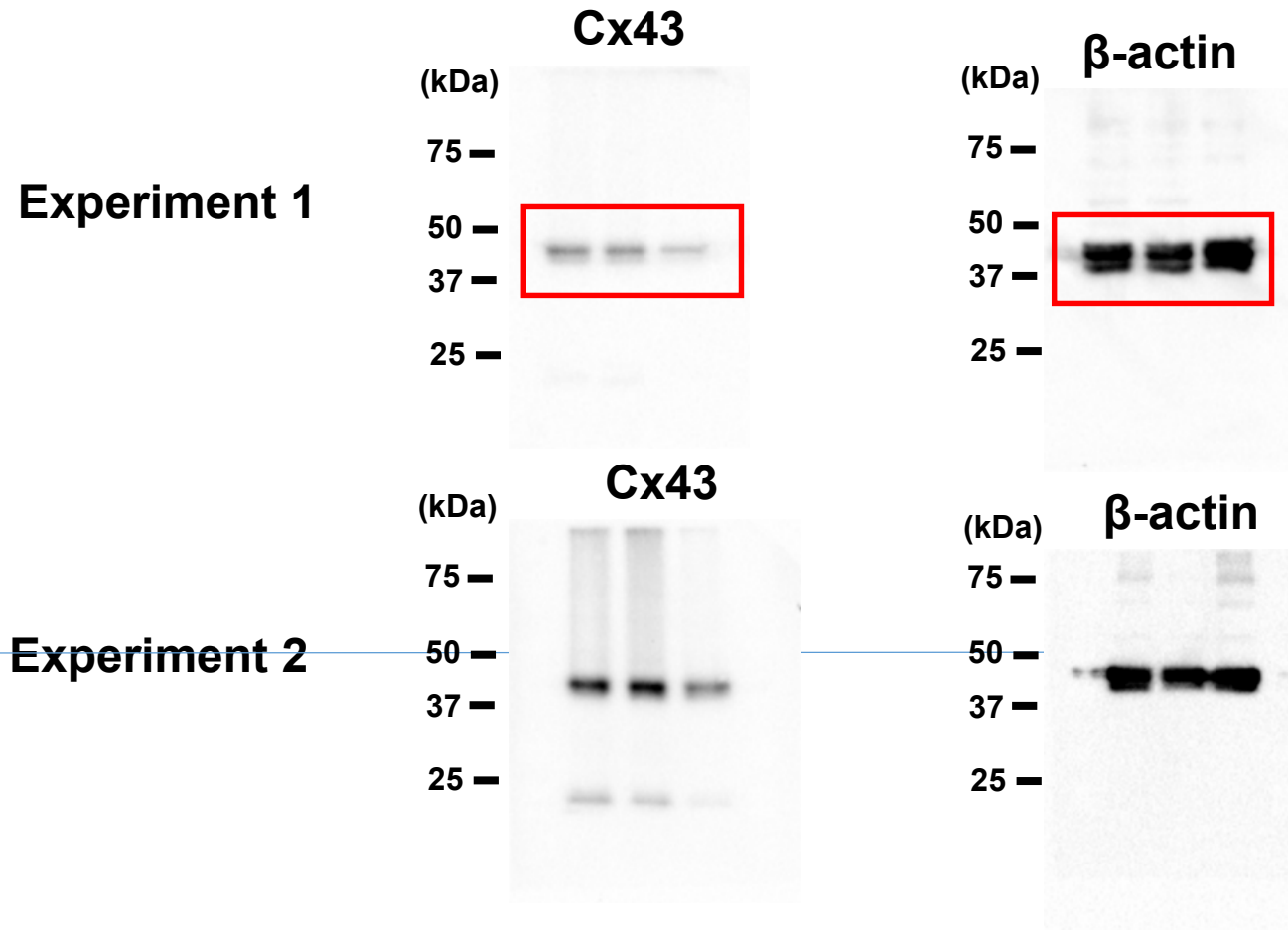
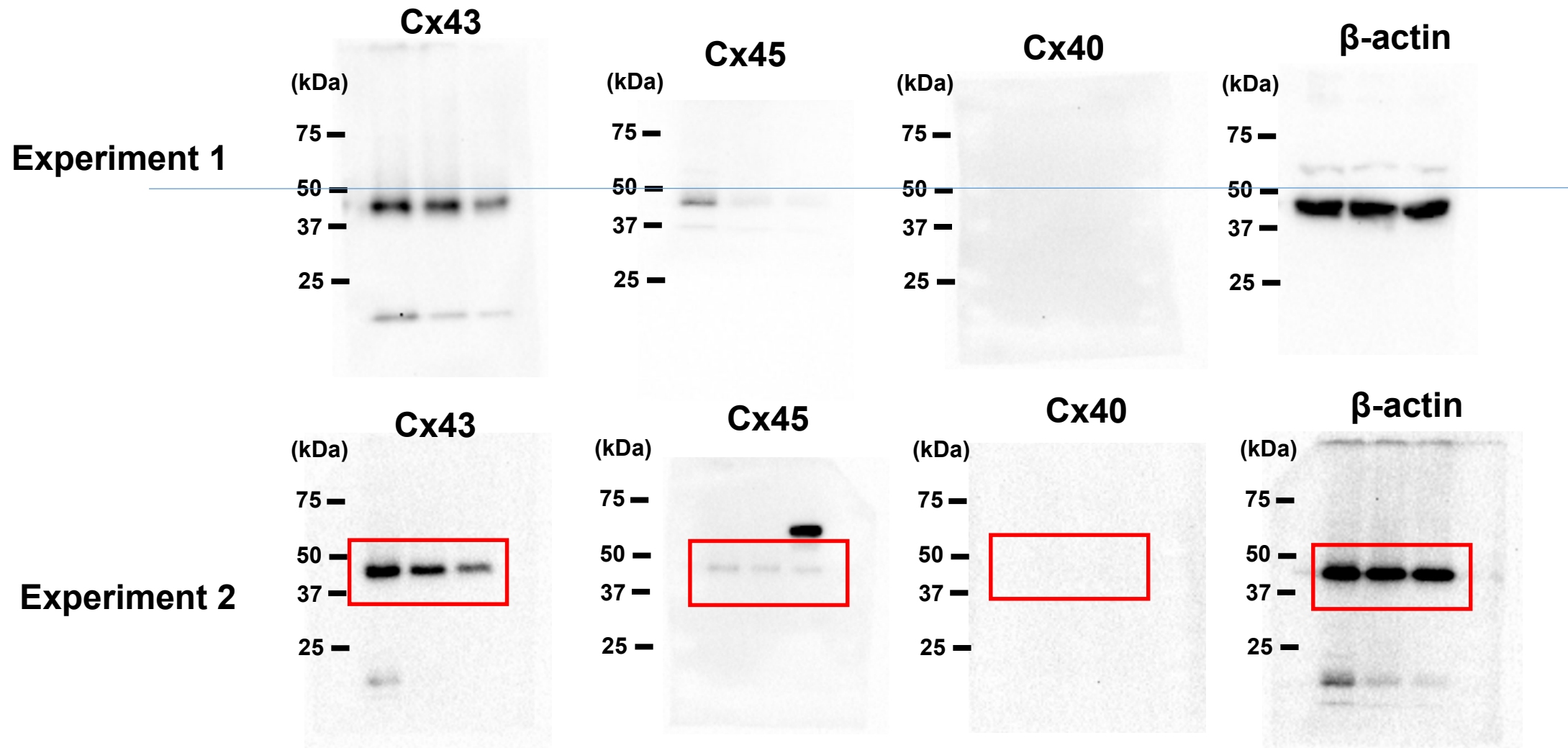


## Unedited Western Blots for Figure 2B



For each experiment, 2 separate gels were loaded with the same whole cell lysates, run, and blotted with the antibody indicated. Red rectangles indicate the areas used for Fig. 2B.

## Unedited Western Blots for Figure 2C



For each experiment, 4 separate gels were loaded with the same whole cell lysates, run, and blotted with the antibody indicated. Red rectangles indicate the areas used for Fig. 2C.